

Technical Rider  
*TCHAIKA*

BELOVA-IACOBELLI COMPANY



**TECHNICAL CONTACT**

Franco Peñaloza Soto  
[technique@belova-iacobelli.com](mailto:technique@belova-iacobelli.com) / +32 494 94 97 64

**PRODUCTION**

Javier Chávez  
[jchavez@ifoperator.be](mailto:jchavez@ifoperator.be) / +32 491 95 53 66

Creation by Natacha Belova and Tita Iacobelli

Performer : Tita Iacobelli

Music & sound design: Simón González

Light : Christian Halkin et Gabriela González

Stage manager : Franco Peñaloza / Simón González

Delegated production: Mons art de la scène

Production: IFO ASBL

Length : 60 minutes

## TOURING TEAM

- 1 Performer
- 1 Technical (sound / light)
- 1 Production
- 1 Director

## \*STAGE

**The dimension can be adapted according to the venue if discussed beforehand with Franco Peñaloza Soto.**

Opening of the minimal stage : 8,50m  
Minimal profundity: 7m  
Minimal hight : 5m

The floor surface must be flat, painted **black**, and must allow easy movement with a wheelchair.

**Please let us know if the seating is raked, specifying the angle.**

A black curtain in background. If you have a wall with a brick tell us.  
A 2 metre rod is needed to hang our curtain (see the light plot)

We come with our scenography.

## \*AUDIO

**The presenter will provide the following items :**

- 1 digital mixer capable of dynamic processing, reverb, delay and graphic eq for each output. FOH.

La compagnie apporte un ordinateur avec son logiciel de gestion du son.

**Diffusion :**

- 3 way P.A. system with a sound pressure level adjusted for the venue.
- 2 monitors, 1 each side of the stage.

**The company provides a wireless microphone.**

**The lightboard and the audio mixer must be next to one another, facing the front of the stage and with no glass in between.**

# \*LIGHTING

À fournir par l'organisateur :

- 30 circuit de 2kw
- 6 convex plan projector 650watts with barn doors
- 11 convex plan projector 1kw with barn doors
- 7 profil 1kw
- 4 Par 64 CP62
- 1 quartz 1kw asymmetric
- The filter (Lee filter : 201 / 205 / 249 / 328)
- Black fire proof Aluminium tape
- 1 gobo holder

The company provides 1 computer with software 1 gobo, 4 snow machines, and 1 fan.

The snow machines and the fan must be connected to dimmers (see the light plot).

For more information please call the technical contact.

## \*ACTRESS LODGE

- The presenter shall provide a private, secure, lockable, clean, well-lit dressing room with a mirror, good heating, ventilation and air conditioning, in close proximity to a bathroom and the stage.
- Fruit, nuts, almonds, coffee and bottled still water should be provided.
- 1 ironing machine.

## \*SCHEDULE

The get-in for the show requires three work shifts of 4 hours each.

Two technicians will be needed: one for the lights and one for the audio.

The lighting technician must be present for all three shifts.

The sound technician must be present for the first and third shifts.

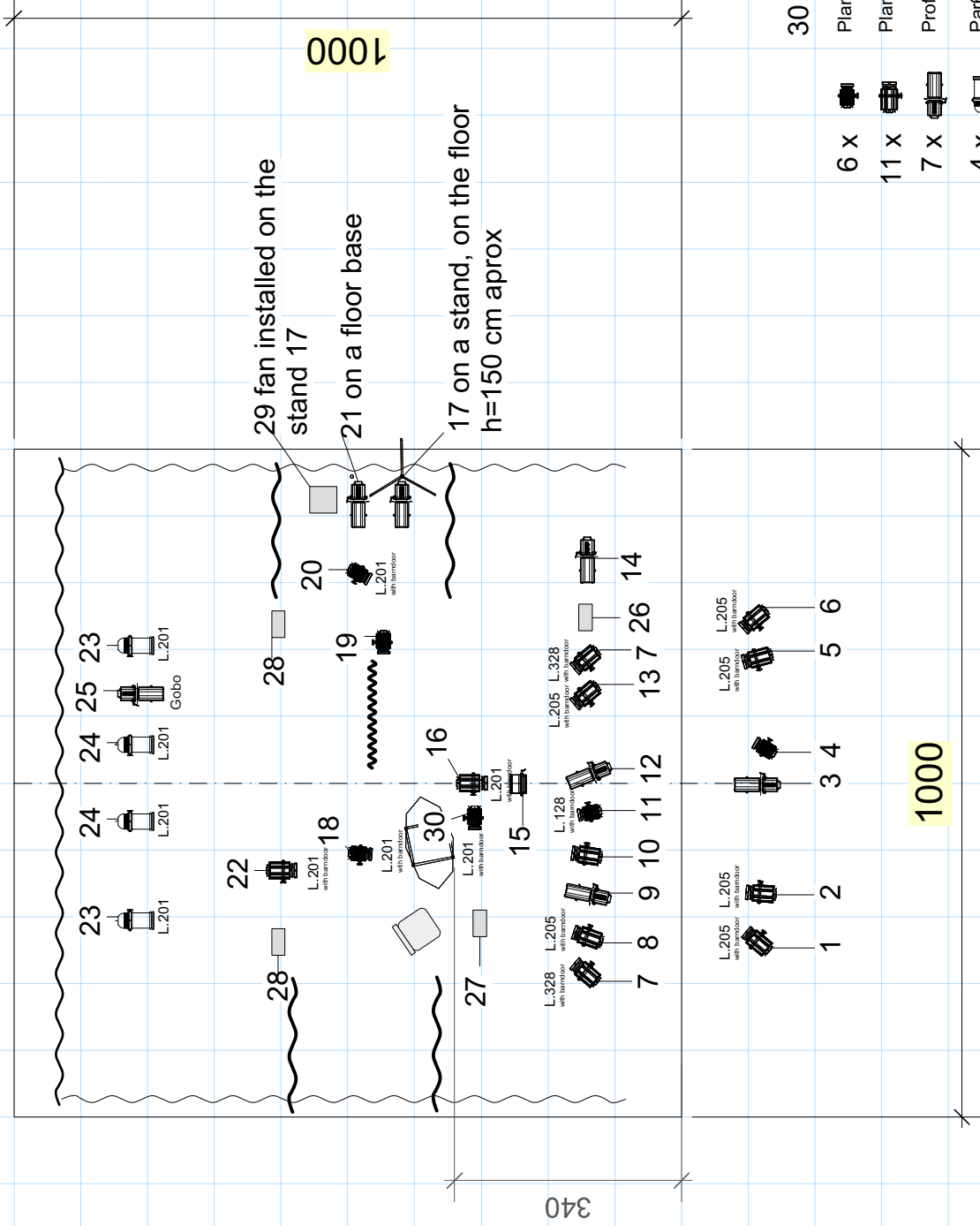
The company technician will operate the show.

Get-out in approximately 1 hour.

We would appreciate it if you could send us the technical plans for your venue, including a list of light fixtures and sound equipment, and the contact for your head technician.

This technical rider is part of the contract for Chaika. Changes must be talked over in advance with the relevant figures from the company.

Thank you for your cooperation.



**30 circuits 2Kw**

6 X		Plano Convexe 650Watts
11 X		Plano Convexe 1.000Watts
7 X		Profile 25/50° 750Watts
4 X		Par64 CP62
1 X		Cyc lights 1.000Watts
4 X		Snow machine
1 X		Fan

The company provides

**Tchaika**

Compania Belova-Iacobelli

Franco Penaloza Soto  
 technique@belova-iacobelli.com  
 +32 49 49 49 764

april 2023 scale 1/100