

L O O O



Belova - Iacobelli Company

Technical Rider - 2023

**TECHNICAL CONTACT**

Franco Peñaloza Soto // +32 494 94 97 64 // [technique@belova-iacobelli.com](mailto:technique@belova-iacobelli.com)

# Creation by **Natacha Belova & Tita Iacobelli.**

Performer: Tita Iacobelli & Marta Pereira

Scenography: Natacha Belova & Camille Burckel de Tell

Puppet creation: Natacha Belova

Music & sound design: Simon Gonzalez

Light design: Christian Halkin

Production: Javier Chavez

Light technician : Franco Peñaloza

Sound technician: Simon Gonzalez / Franco Peñaloza

Stage technician: Bartira Pereira

Length: 60 minutes

**Important** information regarding the correct installation of the set-up and the running of the show.

This technical rider is part of the contract for Loco. Changes must be talked over in advance with the company.

As the show takes place in a particularly dark atmosphere, it is essential that there is no "stray" light in the room or on stage.

Please let us know if there is a balcony.

## **TECHNICAL CONTACT**

Franco Peñaloza Soto// +32 494 94 97 64 // [technique@belova-iacobelli.com](mailto:technique@belova-iacobelli.com)

# STAGE

The scenography is composed of:

- A bed on wheels
- A sphere of 2m diameter; suspended by a pulley system at the end of the show
- Black flock (fireproof cellulose) on the floor
- Puppets

It is **essential** to have a black velvet legs laid in Italian masking style that is adapted to your venue.

The stage must be equipped with a smooth black floor or a black dance floor.

The stage must be cleaned before each performance.

Minimum opening: 8m stage frame + 2m50 on each side of the stage.

Minimum depth: 9m

Minimum height: 6m

A suspension system shall be installed for the good of the show. Please let us know if your venue has a fixed grid.

# LIGHTING

To be provided by the organiser.

- 42 graduated circuits
- 15 Profil type Robert Juliat 614sx 1kw
- 24 Convex plan projectors 1kw with barn doors
- 2 Fresnel 2kw with barn doors
- 2 Par64 CP61
- 10 projector ladders (see plan attached to the technical sheet)
- A lighting console that can receive an Ascii file.
- Clean gelatins in appropriate quantities for the show (Lee filter: 106 - 201 - 600 - 243)
- Black fireproof Aluminium tapes

All projectors must be in working order, perfectly clean and ready to be used.

The company will provide a lighting plan for the venue.

Please indicate the type of lighting console you will be using to host the show in your venue. It is essential that the lighting technician knows perfectly the console we will be working on for the pointing.

The performance will be done in DMX with the company's computer.

# SOUND

## Sound system:

**Front:** 15" or 12" stereo system + subs adapted to the room with a low side if necessary.

Mono central 12" or 8".

**Monitors:** 2 X 12" or 15" on the floor.

**Surround:** 8" or 12" stereo surround adapted to the room.

**Rem:** L-Acoustics, Meyer or equivalent speakers.

**All separate sends.**

## In the control room:

Preferably in the theater hall.

Digital mixing console (16 IN/12 OUT minimum) controllable by IPAD (Yamaha QL, M7CL, Midas M32...)

1 dimmable control lamp + various cabling + sufficient AA batteries (4 per performance)

## THE COMPANY BRINGS:

1 MacBookPro with Ableton Live

1 MacBookPro with Dlight

1 MOTU 828ES sound card

2 Sennheiser EW100 HF systems (516-558MHz) + 2 DPA 6061 microphones

**Remark:** If the frequencies between 516 and 558MHz cannot be used, please provide 2 HF systems (transmitter/receiver + microphone type DPA 6061 or MKE1)

# Provisional Schedule

## 7 people on tour.

- 1 director
- 2 performers
- 1 producer
- 1 sound technician
- 1 lighting technician
- 1 stage technician

## Number of technicians requested.

### Representation Day -1

|                |                                     | SM | Machinist | Light | Sound |
|----------------|-------------------------------------|----|-----------|-------|-------|
| 09:00 -> 12:30 | Installation<br>set + light + sound | 1  | 2         | 3     | 1     |
| 14:00 -> 18:00 | Setting<br>set + light + sound      | 1  | 2         | 3     | 1     |

### Representation Day 0

|                |                                    | SM | Machinist | Light | Sound |
|----------------|------------------------------------|----|-----------|-------|-------|
| 09:00 -> 12:30 | Setting Sound +<br>Light           | 1  | 2 > 1     | 3 > 1 | 1     |
| 14:00 -> 18:00 | Settings +<br>rehearsals           | 1  | 2 > 1     | 3 > 1 | 1     |
| 18:00 -> 18:30 | Stage cleaning                     |    |           |       |       |
| 18:30 -> 19:30 | Setting the stage +<br>preparation | 1  | 1         | 1     | 1     |
| 20:00 -> 21:00 | Show                               | 1  | 1         | 1     | 1     |
| 21:30 -> 23:00 | Disassembly                        | 1  | 2         | 1     | 1     |

# Dressing Room

We will need two heated dressing rooms with a toilet and shower room nearby, mirror and make-up light.

1 iron.

**Catering:** still water and dried fruit/nuts.

# Costume

See costume sheet accompanying this technical rider.

A costume designer is required for every third performance.

# Other requirements

- 10 kilos of sand (counterweight of the ball machinery)
- a vacuum cleaner machine (to store without air part of the scenography)

BELOVA – IACOBELLI  
COMPANY

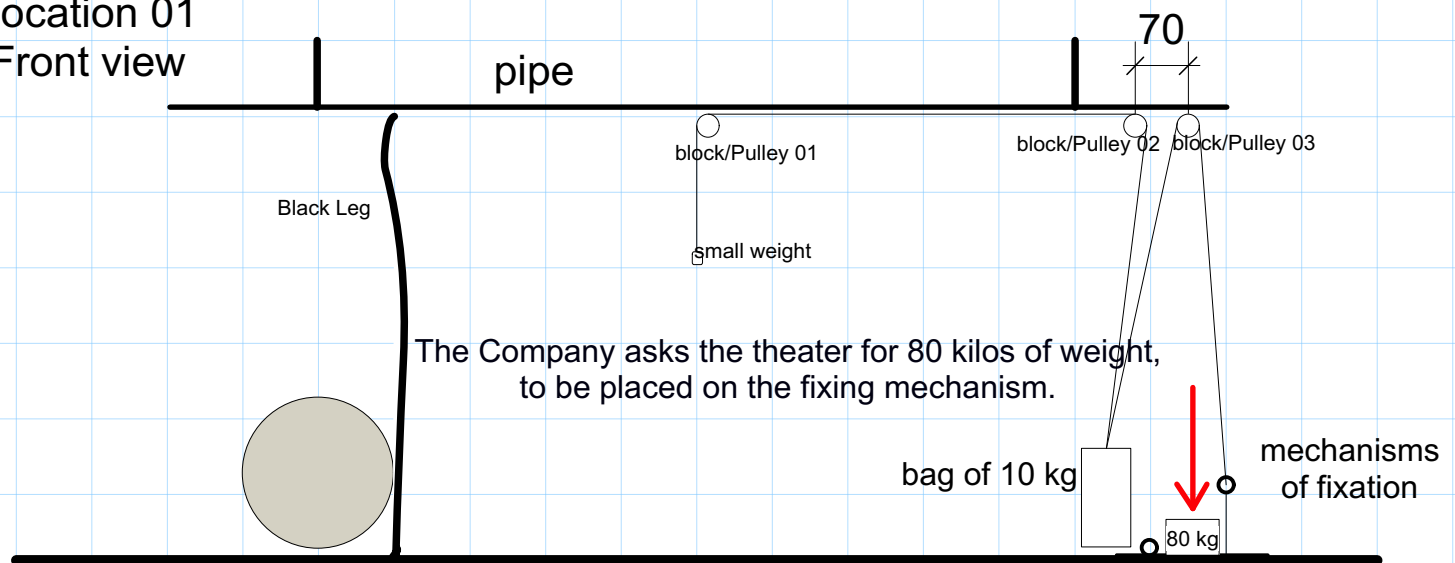
# Description of machinery

At the end of the show, a ball 2 meters in diameter and weighing 40 kilos. it rises up at center stage. To achieve this, a machinery of pulleys and ropes is installed on one of the light pipes. A descriptive video can be found at this link <https://youtu.be/dV6zwMuKSXY>

The company brings all the elements of the machinery.

**The pipe must be completely fixed to prevent any movement.  
It should not move at all.**

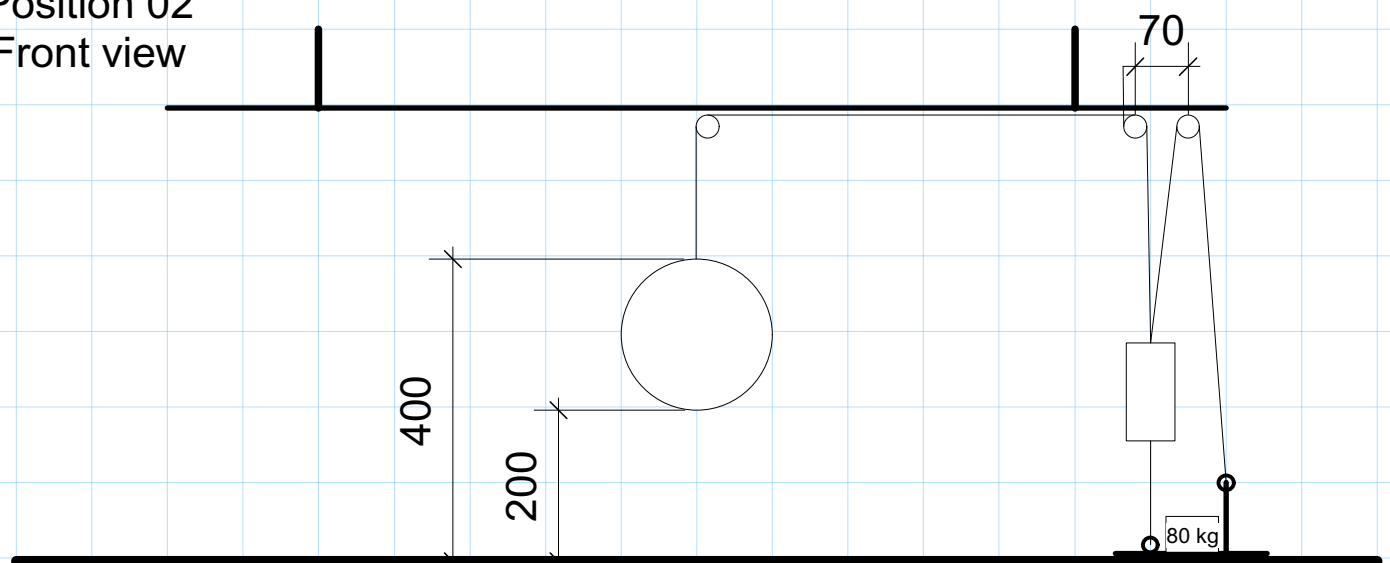
Location 01  
Front view



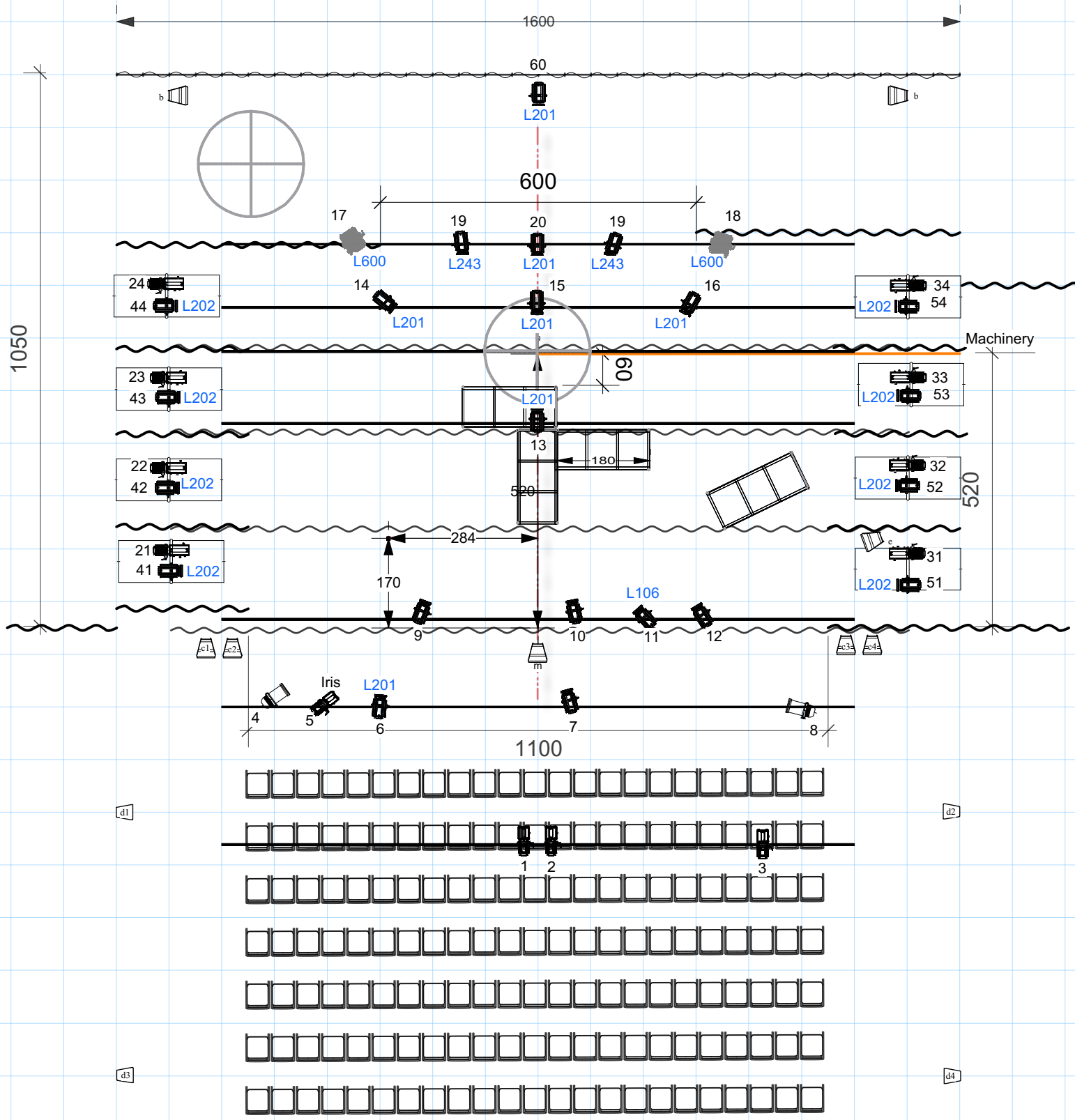
Throughout the show, the ball is hidden behind one of the legs (Italian style).

When the ball is up, forces are generated that could move the pipe.  
The pipe must be firmly fixed to avoid any movement.

Position 02  
Front view

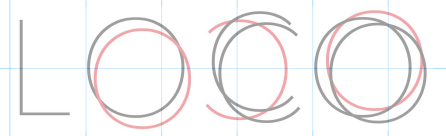






- 42 circuits of 2 Kw
- X 24 PC light Plano Convexe 1KW
- X 2 Fresnel 2kw
- X 2 PAR64 CP61
- X 14 zoom profile 1kw type 614SX

- 15 inch speaker
- 12 inch speaker
- c = P.A. / FOH
- m = Mono central
- b= back stage monitors
- d = surround
- e = front stage monitor



COMPAGNIE BELOVA ~ IACOBELLI

lights Franco Peñaloza Soto - april 2023  
 technique@belova-iacobelli.com  
 +32 49 49 49 764  
 Scale 1/100